

Underlayment & Patching Compounds

Self-Leveling Pourable Underlayment

D-80 DURABOND POURABLE SELF-LEVELING UNDERLAYMENT SYSTEM

An advanced floor underlayment from DAP/Durabond designed specifically for fast leveling of floors. It provides a durable, level and smooth floor surface with minimum labor and installation time. The system consists of two parts: D-80P Powder and D-80L Liquid primer.

The D-80L primer is applied first with a soft pushbroom to prepare the floor for solid adhesion of the 80P self leveling underlayment.

D-80P powder is a portland cement based self leveling underlayment that does not require a latex additive. Mixed with water, it flows and seeks its own level to automatically create a smooth and level surface - no troweling is necessary. Hardens quickly, is shrinkage compensated, crack resistant and will not spall, even when applied in thick layers. Can be used to level and smooth: concrete; terrazzo; ceramic or quarry tile; concrete; wood; cementitious backer boards; brick; pavers; marble; cutback adhesive residue. Can be walked on 2-4 hours after application.

Use to level and smooth floors prior to installation of resilient flooring, ceramic tile, carpet, VCT, rubber flooring, wood substrates, wood parquet or plank, etc. Covers about 50 sq ft per 50 lbs at 1/8" thickness.

Check these outstanding features:

- No troweling
- Low installed cost
- Fast installation
- No sanding or grinding
- Shrinkage compensated
- Crack resistant
- No spalling
- One application to 5" thickness
- Can be featheredged
- Walk on after 2-4 hrs
- Install floor covering after 16 hrs.
- Compatible with most adhesives
- Similar to concrete when dry
- Pumpable
- Mix with water

Prod No.	Type	Unit	Pack	UPC
D-80P	Powder	50 lb.	Bag	70798-63118
D-80L	Primer	Gallons	4/ctn.	70798-63116

Portland Cement Patches

All sheet goods manufacturers now recommend that you use only a Portland cement based patch under their vinyl sheet goods. We searched the market, tested many products, and we chose some of the best!

WEBCRETE 95 LATEX FORTIFIED CEMENT PATCH

DAP/Durabond's premium quality fast setting polymer fortified portland cement patch can be used to feather edge, to skim coat up to 1/2" thickness or as an embossed floor leveler. Because the powder already contains a latex additive, Webcrete 95 is mixed with water - no latex liquid is needed. But, when used as an embossed floor leveler it must be mixed with Durabond Embossed Floor Leveler Additive.

Webcrete 95 can be used indoors or outdoors, on, above or below grade, and it can be applied up to 1/2" thickness in a single application. May be used over concrete, masonry, wood floors and cutback adhesive residue. Use under resilient flooring, ceramic tile, carpet, wood flooring, rubber flooring, etc. Pot life: 10-15 minutes; working time: 5-10 minutes; initial set: 25-35 minutes. Floor covering can be installed after initial set. Covers about 35 sq ft per 25 lb bag at 1/8" thickness.

Webcrete 95 when cured has a very high compressive strength (3500 psi) and properties similar to concrete. You will find it the equal or better than more expensive featheredge patches now in use.

DAP/DURABOND Embossed Floor Leveler Additive To be added to Webcrete 95 when used as an embossed floor leveler. Adds strength and flexibility and gives a creamy consistency. Quarts only, 12 per case. UPC 70798-60553

Prod No.	Type	Unit	Pack	UPC
D95SP-40	Powder	40 lb	Pail	70798-63170
D95P-25	Powder	25 lb	Bag	70798-63168
D95P-10	Powder	10 lb	Bag 4/ctn	70798-63166
D95L-Q	Embossed Floor Leveler	Quarts	12/ctn	70798-60553



D-80P & D-80L



D95 WEBCRETE - 40



D95 WEBCRETE - 25



D95L-Q
Embossed Floor Leveler Additive

PATCH

Call Toll Free

Baltimore 800-556-7899 • Harrisburg 800-421-7575 • Richmond 800-441-2144 • Roanoke 800-575-5655
Raleigh 800-551-0666 • Charlotte 800-896-6710 • Charleston 800-814-1169

Underlayment & Patching Compounds

PATCH



Ultra-33 & Ultra-25



Vitetex Liquid Latex
5 gal. container



D60P-40 & D60L-G



Webcrete 98 Patch - 25



Webcrete 98 Patch - 40



Deep Rock
Self Leveling
Concrete Repair

Portland Cement Patches (Cont.)

VI-TEX ULTRA PATCHING COMPOUND

Our best selling patch – your best value! A quick setting polymer modified cementitious patching compound that can be mixed with water or latex additive. Vi-tex's high polymer concentration gives improved bonding, resilience and moisture resistance.

Use Vi-tex Ultra for patching and filling holes, voids and depressions in concrete or plywood underlayment prior to installing carpet, resilient flooring, wood parquet, ceramic tile; slate; marble; granite or stone veneer floors or walls. Smooth texture trowels easily from feather edge to 1/2" thickness. Apply in two coats for greater thicknesses.

When mixed with Vi-tex latex liquid, it can be used to skimcoat embossed resilient flooring or to cover and seal existing cutback adhesive. Dries very hard, and results in an impervious coating. *Guaranteed not to stain vinyl sheet goods from: Armstrong; Mannington; Tarkett; Congoleum; and Domco.* Covers about 40 sq. ft. per 25 lbs. at 1/8" thickness. Stocked in 25 and 33 lb. bags.

Prod No.	Type	Unit	Pack	EDP No.
Ultra-25	Powder	25 lb.	Bag	[VITEX-25]
Ultra-33	Powder	33 lb.	Pail	[VITEX-33]

VI-TEX UNDERLAYMENT LIQUID

Acrylic latex additive used with Vi-tex Ultra to level embossed resilient floor coverings with vinyl or urethane wear layers, or to cover and seal existing cutback adhesive. Gives Vi-tex Ultra better adhesion to wood, concrete, embossed resilient floor covering, unglazed ceramic tile, or cutback adhesives. Reduces drying time of Vi-tex Ultra to 55 minutes, and extends working time to 50 minutes. Gallons and 5 gallons.

Prod No.	Unit	Pack	EDP No.
Vitetex Liquid Latex	5 gal	Jug	[VI-LATEX-5]
Vitetex Liquid Latex	Gallon	4 / ctn	[VI-LATEX-G]

D-60P/60L PORTLAND CEMENT UNDERLAYMENT SYSTEM

DAP/Durabond D-60 is a two-part underlayment that provides a resilient high strength surface that will not crack, check or break up. Use indoors or outdoors over concrete, masonry, wood subfloors, sidewalks and curbstones. May also be used over old cutback adhesive residue. Approved for use under floor tile, sheet goods and most other floor coverings.

Will featheredge without crumbling, and can be troweled to 1/2" thickness in one application or up to 1" in multiple layers. Powder must be mixed with D-60L Latex liquid. Pot life: 45-90 minutes; working time: up to 2 hours; initial set: 2½ hrs. Floorcovering can be installed after 6 hours. Fully cured (28 days) compressive strength of 4,500 psi.

D-60L powder is available only in 40 lb bags. The Latex liquid additive is stocked in gallons only; it is also available in 5 gallon pails by special order; UPC 70798-63100.

Prod No.	Type	Unit	Pack	UPC
D60P-40	Powder	40 lb.	Bag	70798-63000
D60L-G	Liquid	Gallon	4/case	70798-63090

DB98 WEBCRETE 98 PATCH

A polymer fortified Portland cement patch ready to mix with water. Can be used to skim coat or feather finish up to 1/2" thick. Apply over concrete, masonry, wood or glazed tile. Can be used as an embossed floor leveler over vinyl sheet goods. Will bond to porous and non-porous substrates. Coverage: up to 40 – 60 sq ft per 40 lb bag at 1/8" thickness. Use Webcrete 98 for large commercial jobs — designed so full bags can be mixed at one time. 25-35 minute pot life; dries in 30-60 minutes. DeWalt drill No. DW 245 is recommended for mixing this patch — it has the proper speed and torque.

Size	Pack	Wt
10 lb pail	4/case	41 lbs
25 lb bag	1	26 lbs
40 lb bag	1	41 lbs

FISHMAN

See page 98 for ordering information from our 12 branches.

Visit our Website at www.lfishman.com

Underlayment & Patching Compounds

Gypsum Based Patches

DEPENDABLE WHITE SKIMCOAT UNDERLAYMENT SYSTEM

The favorite of installers for years! Dependable Skimcoat is quick-setting, fast-drying, smooth-spreading, and it trowels to a feather edge. Use Dependable on concrete or wood floors as an underlayment or as a patching compound (hole filler). Does not shrink or swell and is highly water-resistant when dry. Skimcoat is mildew-proof when mixed with latex liquid. **Caution: Under vinyl flooring (sheet vinyl or tiles) mix only with Latex Liquid; do not mix with water!** Not recommended where there is a moisture condition in the concrete subfloor. Contains no asbestos. Covers approximately 66 sq. ft. per 100 lbs. at 1/4" thickness.

Skimcoat Powder		White Latex Powder	
D-9100	100 lb. Drum	D-9005L	5 Gal.
D-9050	50 lb. Pail	D-9001	1 Gal. (4/case)
D-9035	35 lb. Pail	D-900Q	1 Qt. (12/case)
D-9025	25 lb. bag (4/drum)		
D-9010	10 lb. ctn (4/case)		
D-9005	5 lb. ctn (6/case)		

D-9001 WEBPATCH POLYMER FORTIFIED PATCH

Polymer (latex) fortified powder is ready to mix with water. Use mixture to patch or fill cracks, seams and holes in concrete, masonry, drywall and wood. DAP D-9001 forms a smooth and even surface for resilient floor coverings, carpet, wood flooring, paneling and other decorative products. For interior use only. Fast-setting, non-shrinking and mildew resistant. Pot life: 15-20 minutes; working time 20-30 minutes. Covers approx 75-80 sq ft per 25 lb bag at 1/16" thickness. Floor covering can be installed after 40 minutes.

Size	Wt.	Pack	EDP No.
D-9001-32	32 lb	Pail	70798-63022
D-9001-25	25 lb	Bag	70798-63020

D-90 WEBPATCH

An economical, fast drying patch from DAP/Durabond. D-90 Webpatch powder is ready to mix with water or with Durabond D-60L latex liquid. Patches cracks and holes and forms a smooth, even surface on concrete, masonry, drywall or wood. For interior use only. Covers approx. 75-80 sq ft per 25 lb bag at 1/16" thickness. Pot life 10-15 minutes; working time 15-20 min. Dries in 20-30 minutes; floor covering can be installed after 40 minutes. Mix with DAP D-60L latex liquid for better compressive strength, cohesion and adhesion to all surfaces and resistance to water and alkali.

Size	Wt.	Pack	EDP No.
D-90-32	32 lb	Pail	70798-63057
D-90-25	25 lb	Bag	70798-63050
D-90-8	8 lb	Tub	70798-10316



Dependable Skimcoat



D-9001-25



D-9001-32



D-90-8



D-90-25

PATCH

Installation Tips: Concrete

- Porous or powdery concrete should be primed or sealed using a latex milk, such as Dependable Latex Liquid. Apply with a mop, a squeegee or a sprayer. For large areas, you can dilute the Latex liquid and apply with a pump sprayer.
- A quick way to test a floor for porosity is to pour a little bit of water on it. If the water beads up follow adhesive instructions for a non-porous floor. If it soaks in treat it as a porous floor. This simple test should be performed anytime you are removing old floor covering and leaving adhesive residue on the floor. It is also a good way to test to see if a sealant has been applied to the floor.
- To extend the pot life of a cement based floor patch mix it with cold water. The colder the water the longer the working time.

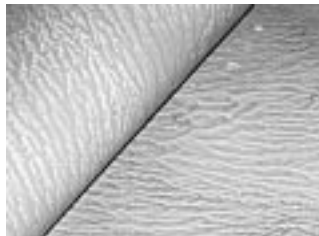
Call Toll Free

Baltimore 800-556-7899 • Harrisburg 800-421-7575 • Richmond 800-441-2144 • Roanoke 800-575-5655
Raleigh 800-551-0666 • Charlotte 800-896-6710 • Charleston 800-814-1169

Controlling Moisture Vapor Emission

The Problem

All concrete emits moisture vapor, and most flooring failures result directly from a high emission of moisture from the slab. Water vapor emission from a concrete slab is caused by negative air pressure. Under the slab the soil temperature is typically about 55° with 100% relative humidity. Room temperature is higher and relative humidity is lower, resulting in lower static vapor pressure on the room side of the slab. This differential in temperature and humidity causes vapor to be drawn out of the slab into the room environment.



Moisture trapped under a sheet vinyl floor.

When concrete is mixed, additional water (water-of-convenience) is added to produce a plastic, workable concrete mix that will be easy to place. Without the extra water the mix would be difficult to move and properly place. The excess water-of-convenience (WOC) needs to dry out of the slab . . . which could require as long as several months, depending upon several variables.

If a flooring failure occurs due to moisture after being installed over a green slab, WOC is the likely cause. When moisture failures occur on well-aged slabs, high porosity—due to an improper water/concrete ratio—is the most likely cause. The excess WOC leaves voids or capillaries inside the slab, and this is a perfect environment for containing moisture, much like the pores of a sponge. All concrete slabs are porous, but increased porosity caused by too much water in the mix is the root reason for vapor emission failures years later. Since the volume of emission is contingent upon porosity, it is important to create a low water to cement ratio concrete.

Three Steps To Avoiding The Problem

The first step to achieving low emissions is cement with a low water/cement ratio. The next step is a high quality vapor retarder material properly installed beneath the on-grade concrete slab. Third is proper curing of the concrete.

If a flooring failure occurs due to moisture after being installed over a green slab, "Water Of Convenience" is the likely cause.

All on grade concrete slabs should have a high quality vapor retarder material properly installed beneath the slab, even when the water table is determined to be well below the building site, and free draining soils are used beneath the slab. Otherwise vapor pressure differentials above and below the slab can lead to moisture vapor rising through soils and concrete and condensing beneath floor coverings, coatings and adhesives.



Mold in carpet system caused by vapor emission from slab.

The Measurement Of Vapor Emission

Unfortunately, flooring contractors and installers must determine whether a concrete floor is ready to accept the adhesive and floor covering, usually without knowing how the concrete was mixed, how it was cured, or whether there is a moisture retarder beneath the slabs. To answer these questions you must accurately measure the amount of moisture vapor being emitted from the slab, whether on, above or below grade. You cannot rely on visual appearance or on the age of the slab. The available tests are: Mat Tests; Bond Tests; Electronic Meters that measure moisture content; Chemical Chip Tests; and Calcium Chloride Tests.

The Calcium Chloride Test is the only well established and acceptable test of dynamic moisture. It produces quantified results to which specifications from flooring manufacturers are directly applicable. Virtually all major manufacturers and The Carpet and Rug institute specify that moisture vapor emission must not exceed 3.0 pounds per 1,000 sq. ft. in 24 hours for resilient floor coverings and most carpets, and up to 5.0 pounds per 1,000 sq. ft. for some carpets with porous backing.

We offer a Calcium Chloride Test Kit that should be used before any floor covering is installed over a concrete substrate. See the next page for more information on how to order the test kit.

The Solutions

We offer a full range of solutions, in cooperation with two outside firms, for controlling moisture vapor emissions.

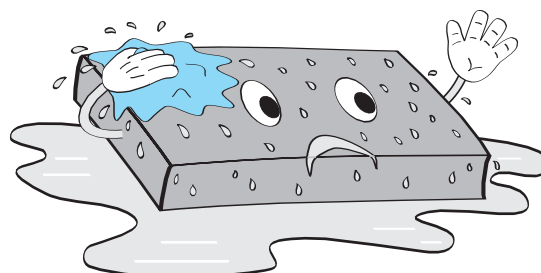
Floor Seal Technology ("FST") has developed a complete program of inspection, testing and analysis of the nature and extent of the moisture problem. Depending upon the seriousness of the moisture vapor problem, FST will apply from 1 to 6 levels of treatment. The products applied may include: penetrants; coatings; or membranes.

FST vapor emission treatments are warranted to prevent failure of the finished flooring system due to moisture vapor or salt migration for 10 years. The warranty covers the cost of the treatment as well as the costs of the finished flooring materials or coating, and installation labor.

A much different approach is used by **Moisture Intrusion Technology**—a fast setting, three part waterproofing system that may be applied by the flooring contractor which has proven effective in controlling vapor emission of up to 10.0 lbs per 1000 sq. ft. in a 24 hour period. This system can also be used for leveling. It has been used on hundreds of thousands of square feet in the past 15 years and carries a 5 year warranty.

This is a very brief overview of an extremely complex and technical problem. For more detail, ask for a copy of *Concrete Vapor Emission Control for Flooring Materials & Coated Surfaces*, ©1997 by Floor Seal Technology, Inc., or for Moisture Intrusion Technology's literature.

See Next Page For Vapor Emission Control Products



Concrete Sealers & Moisture Barriers

TA-625 MOISTURE TEST KIT

An easy to use, safe, accurate, and inexpensive test kit to avoid adhesive failures caused by moisture in concrete floors. Plastic dish containing chemical crystals is placed on the floor, covered, sealed, and left in place for 2–1/2 days. The dish is then mailed to a laboratory for analysis, and a written report will be sent back to you one working day after receipt of the kit at the lab. **Kit has limited shelf life, so we order it for you when you need it.**

Kit includes: pre-weighed airtight container containing anhydrous calcium chloride; 1 oz. Bottle testing of pH fluid; 2 pH test strips in a sealed foil pouch; clear plastic cover; tape to seal cover to floor; self addressed pouch to return sample to lab for analysis; warning flag to keep people away from test patch while test is in progress. **This is a must procedure for every adhesive installation.**

CR-260 MOISTURE DETECTOR METER

Don't guess! Be sure that the slab is dry with this moisture detector. Battery-powered meter gives instant reading of the relative moisture in concrete slabs. Comes with complete instructions for simple operation. Uses two 9-volt batteries. Weighs 1.3 lbs.

VITEX CONCRETE SEAL SYSTEM - FAST SETTING

A three-part process for waterproofing concrete, masonry and other substrates before installing: tile; sheet goods; ceramic tile; rubber; vinyl; epoxy systems or carpet. It results in a continuous waterproof membrane that inhibits subsurface moisture from penetrating to the surface. Consists of a base coat, an intermediate rubber coat and a final finish coat. Can also be used to level floors, and it can act as the finished floor. 25 lb bag of Reinforcing Powder mixed with 1 gallon of Concrete Seal Liquid Additive covers 40-45 sq ft at 3/32" thickness as the base coat or finish coat. One gallon of the rubber coat covers 100 sq ft. Five year warranty when properly installed by a certified Vi-tex installer. Ask for details about training and certification. **Special order.**

MD-10 BARRIER COATING

An exciting new product with amazing uses. A high strength latex-based compound that prevents adhesives from reactivating cut-back and other types of old adhesives, and creates a surface that virtually all flooring and carpet adhesives will bond to. Works on painted surfaces, fiberglass boat decks, and on fire rated plywood that rejects all adhesives. Has even permitted adhesive to bond on an old garage floor. Can also be used as a concrete sealer. Will prevent porous floors and walls from absorbing adhesive. Is solvent-free, non-toxic, and has ultra low odor. Waterproof when dry. And you get all of these features for less than 10¢ per sq foot. Should be applied with a roller, but can be brushed or troweled. Allow to cure 24 hours before applying new adhesive. Covers 26-35 sq yds per gallon.

Size	Pack	EDP No.
4 gal	Pail	[MD10-4]
Gallons	4 per ctn	[MD10-G]

DEPENDABLE CONCRETE SEALER

Helps protect new or old concrete floors against water penetration, hydrostatic and capillary action, wicking or migration. New floors should be cured for 25 days before sealing. Covers up to 175 sq. feet per gallon. Available in Gallons, 4 per carton and 5 gallon pails. Gallons sold in full cartons only. **Special order.**

DEEP ROCK SELF LEVELING CONCRETE REPAIR

Use for patching holes, deep-fill repairs, grouting, setting bolts, etc. in concrete and masonry. Self-leveling, quick setting, fast curing, non-shrinking. Dries with exceptional high density, compressive strength and hardness. 10, 25 and 50 lb. Bags. **Special order.**

TIP: Sandy or Gritty Floors

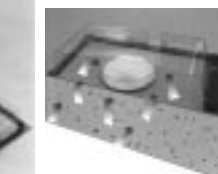
Before spreading adhesive on a sandy or gritty concrete floor, apply a thin coating of liquid latex additive (Dependable, or Mapei Plani/Patch Plus) to seal the floor and make the adhesive easier to spread with a better bond.

TIP: Spreading Adhesive Over Patches

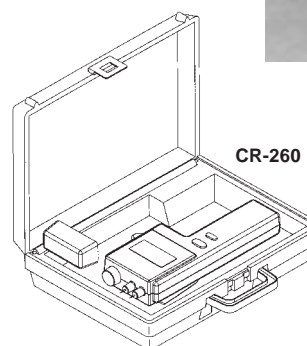
Before spreading adhesive over any patched area of floor apply a thin coat of adhesive with the flat side of your trowel ... this gives the adhesive more grab over the patched area and, to some degree, serves as a sealer between the patch and the flooring.



TA-625



TA-626



CR-260



VITEX
CONCRETE
SEAL
SYSTEM



MD-10



Dependable
Concrete Sealer

MOISTURE TESTS

MOISTURE BARRIERS

CONCRETE SEALER

Call Toll Free

Baltimore 800-556-7899 • Harrisburg 800-421-7575 • Richmond 800-441-2144 • Roanoke 800-575-5655
Raleigh 800-551-0666 • Charlotte 800-896-6710 • Charleston 800-814-1169